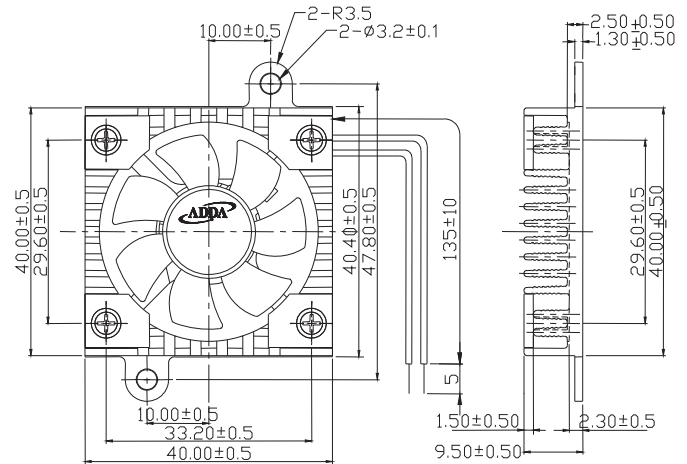
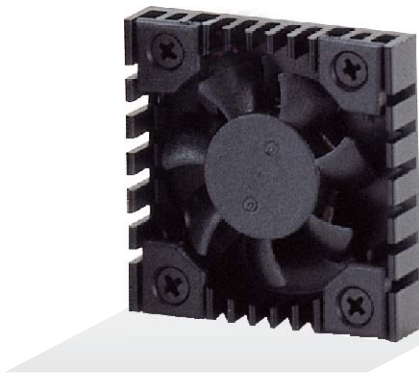




AP4010 SERIES

External Dimensions



Frame:Plastic(UL:94V-0)
Impeller:Plastic(UL:94V-0)
Lead wire:UL1571AWG28

Specifications(Nominal)

*:Noise is measured at the distance of one (1) meter from the axis of intake.

Bearing type: ○=Ball ※=Sleeve ◯=1B1S ●=Hypro bearing

Frame size (mm)	Model No.	Bearing System Type	Rated Voltage (VDC)	Current (A)	Power (W)	Rated Speed (rpm)	Maximum AirFlow (CMM) (CFM)		Maximum Pressure (InAq) (mmAq)		*Noise Level (dB/A)	Weight (g)
40x40x10	AP0405MX-G70	●	5	0.13	0.65	8000	0.133	4.70	0.111	2.78	28.0	
	AP0412LX-G70	○●	12	0.05	0.60	6500	0.099	3.50	0.063	1.58	19.0	19.2
	AP0412MX-G70	○●	12	0.06	0.72	8000	0.133	4.70	0.111	2.78	28.0	

Specifications subject to change without notice.

The specification for bearing type is for reference only , for more bearing types information, please contact with your ADDA sales representative, thanks!!
(網頁上呈現產品軸承資訊均以參考為主，若需其他產品資訊請聯絡您在ADDA的業務代表，謝謝!!)

*Motor protective circuit and third lead wire functions

0	1	2	3	4	6	7	8	9	A	B
✓			✓							

*Safety approvals

				✓